



egg

## egg

The butterfly starts life as a very small round **egg**. They are usually laid on the leaves of plants. Inside the eggs are tiny caterpillars called larva that move.



larva

## larva

When the egg hatches, the tiny **larva** called caterpillars will eat the leaf they are born onto. Caterpillars grow very quickly and molt their skin several times.



pupa

## pupa

As soon as the caterpillar is done growing and they are big enough, they form a **pupa**. In this **pupa** the caterpillar changes into a butterfly. This **pupa** is also called a chrysalis. This change is called metamorphosis.



butterfly

## butterfly

When the caterpillar is done changing inside the pupa it emerges from the pupa a beautiful butterfly. As soon as the butterfly has rested, it will pump blood into its folded wings to get them working.

egg

larva

pupa

butterfly

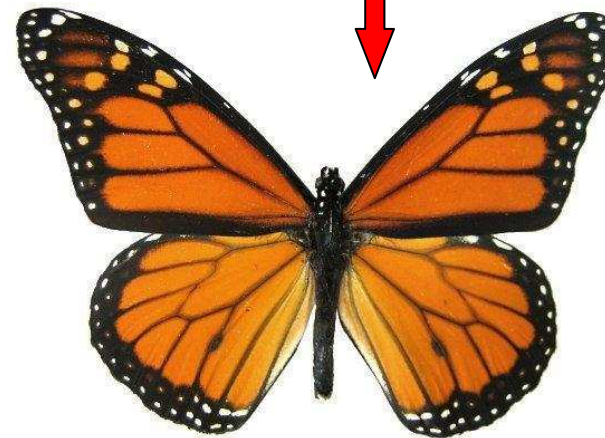
# Life cycle of a butterfly



larva



pupa



butterfly



egg

